

★ BREEDS OF COWS ★

There are over nine million cows in the United States today and about 90 percent of these are Holsteins. There are seven major breeds.

VITAL STATISTICS OF A HOLSTEIN MILK COW

GENDER: Female

HEIGHT: 5 TO 5½ Feet

WEIGHT: 1,500 TO 1,800 lbs.

BODY TEMPERATURE: 101° F

AMOUNT OF MILK HELD IN UDDER: 25 to 50 lbs.

HOLSTEINS (BLACK & WHITE)



- Originated in Europe and brought to U.S. by Dutch settlers
- Know for highest milk production of all breeds
- The Holstein is the dominant dairy breed in U.S.

RED & WHITE HOLSTEIN



- Originated in U.S. and Canada when farmers started selecting for recessive red hair color trait
- Most recently recognized into breed family in 1964

JERSEYS (YELLOWISH-BROWN)



- Originated on the island of Jersey, 15 miles off the coast of France
- Produce more butterfat in their milk than any other breed

GUERNSEY (GOLDEN TAN & WHITE)



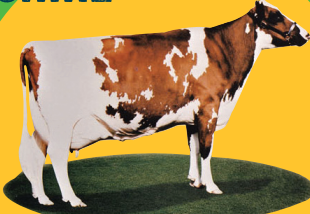
- Originated on an island in the English Channel, 30 miles off the coast of France
- Known to be hearty and adaptable

BROWN SWISS (BROWNISH GRAY)



- Originated in the Alps Mountains
- They are hearty and rugged, with superior feet and legs
- Known to be quiet and docile

AYRSHIRE (WHITE WITH RED SPOTS)



- Originated in Scotland
- Known for their vigor and efficiency of milk production

MILKING SHORTHORN (ROAN)



- Originated in England
- Known to be very versatile